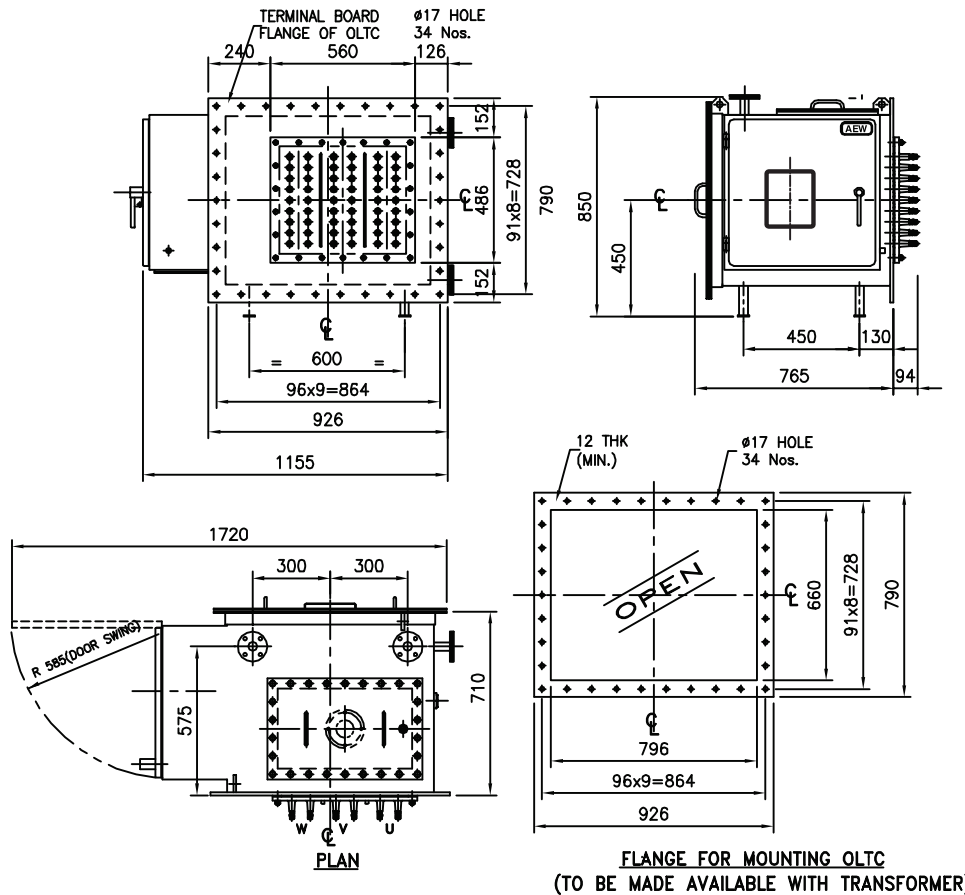


# ON LOAD TAP CHANGER

22 kV, 200 Amps, 17 Position, 3 Phase



## Technical Data

Type of connection	: Linear
Rated voltage	: 22 kV
Max system voltage	: 24 kV
Max voltage per step	: 600 V
Max no. of steps	: 16
Max no. of positions	: 17
Max rated through current	: 200 A
Time per tap change	: 4-6 Sec.
Weight with oil	: 580 Kg
Oil for first filling without conservator	: 295 Ltrs.
Short circuit withstand	: 4.0 kA for 3 Sec.

## Test Voltage

### Power frequency (kV)

Between phases	50
Between phase & Earth	50
Between adjacent contacts	12
Across range	20

### Impulse (kV Peak)

Between phases	125
Between phase & Earth	125
Between adjacent contacts	30
Across range	60