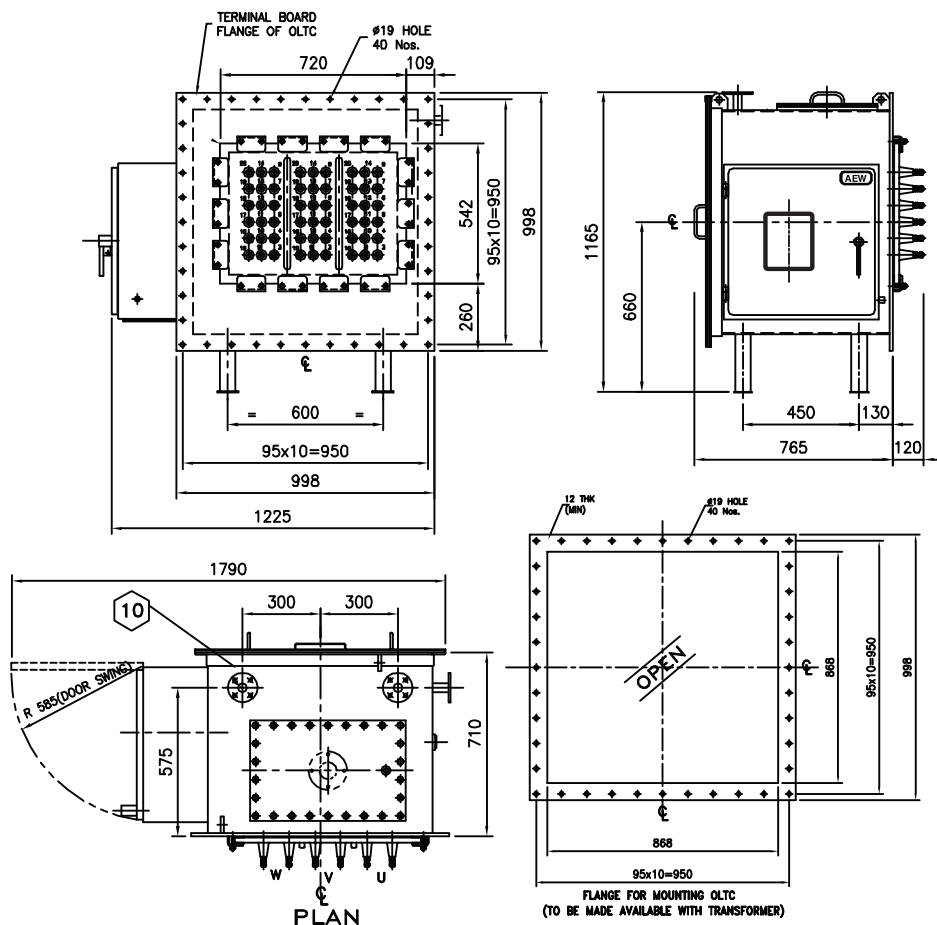


ON LOAD TAP CHANGER

33 kV, 200 Amps, 17 Position, 3 Phase



Technical Data

Type of connection	: Linear
Rated voltage	: 33 kV
Max system voltage	: 36 kV
Max voltage per step	: 850 V
Max no. of steps	: 16
Max no. of positions	: 17
Max rated through current	: 200 A
Time per tap change	: 4-6 Sec.
Weight with oil	: 816 Kg
Oil for first filling without conservator	: 700 Ltrs.
Short circuit withstand	: 4.0 kA for 3 Sec.

Test Voltage

Power frequency (kV)

Between phases	70
Between phase & Earth	70
Between adjacent contacts	15
Across range	25

Impulse (kV Peak)

Between phases	170
Between phase & Earth	170
Between adjacent contacts	50
Across range	60